

**POLDIP3 Antibody (N-term)**  
**Affinity Purified Rabbit Polyclonal Antibody (Pab)**  
**Catalog # AP20109a**

**Specification**

---

**POLDIP3 Antibody (N-term) - Product Information**

Application	IHC-P, IF, WB,E
Primary Accession	<a href="#">Q9BY77</a>
Other Accession	<a href="#">Q8BG81</a> , <a href="#">NP_115687.2</a>
Reactivity	Human, Mouse
Host	Rabbit
Clonality	Polyclonal
Isotype	Rabbit IgG
Calculated MW	46089
Antigen Region	93-120

**POLDIP3 Antibody (N-term) - Additional Information**

**Gene ID** 84271

**Other Names**

Polymerase delta-interacting protein 3, 46 kDa DNA polymerase delta interaction protein, p46, S6K1 Aly/REF-like target, SKAR, POLDIP3, KIAA1649, PDIP46

**Target/Specificity**

This POLDIP3 antibody is generated from rabbits immunized with a KLH conjugated synthetic peptide between 93-120 amino acids from the N-terminal region of human POLDIP3.

**Dilution**

IHC-P~~1:25

IF~~1:25

WB~~1:1000

E~~Use at an assay dependent concentration.

**Format**

Purified polyclonal antibody supplied in PBS with 0.09% (W/V) sodium azide. This antibody is purified through a protein A column, followed by peptide affinity purification.

**Storage**

Maintain refrigerated at 2-8°C for up to 2 weeks. For long term storage store at -20°C in small aliquots to prevent freeze-thaw cycles.

**Precautions**

POLDIP3 Antibody (N-term) is for research use only and not for use in diagnostic or therapeutic procedures.

**POLDIP3 Antibody (N-term) - Protein Information**

**Name** POLDIP3

**Synonyms** KIAA1649, PDIP46

**Function** Is involved in regulation of translation. Is preferentially associated with CBC-bound spliced mRNA-protein complexes during the pioneer round of mRNA translation. Contributes to enhanced translational efficiency of spliced over nonspliced mRNAs. Recruits activated ribosomal protein S6 kinase beta-1 I/RPS6KB1 to newly synthesized mRNA. Involved in nuclear mRNA export; probably mediated by association with the TREX complex.

**Cellular Location**

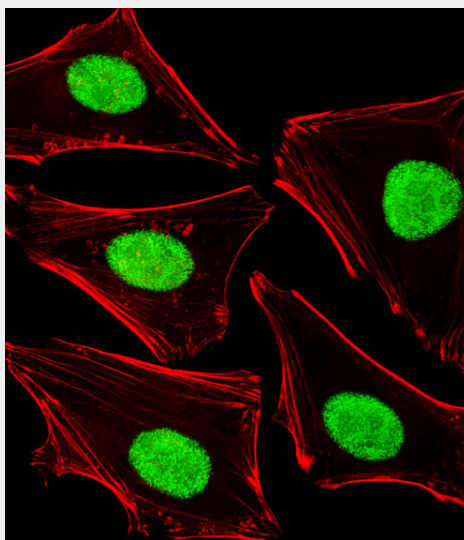
Nucleus. Nucleus speckle. Cytoplasm. Note=Nucleocytoplasmic shuttling protein

**POLDIP3 Antibody (N-term) - Protocols**

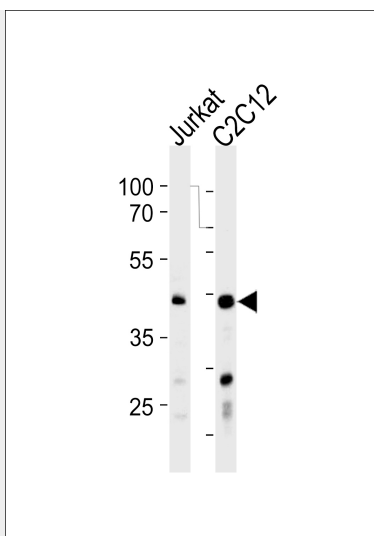
Provided below are standard protocols that you may find useful for product applications.

- [Western Blot](#)
- [Blocking Peptides](#)
- [Dot Blot](#)
- [Immunohistochemistry](#)
- [Immunofluorescence](#)
- [Immunoprecipitation](#)
- [Flow Cytometry](#)
- [Cell Culture](#)

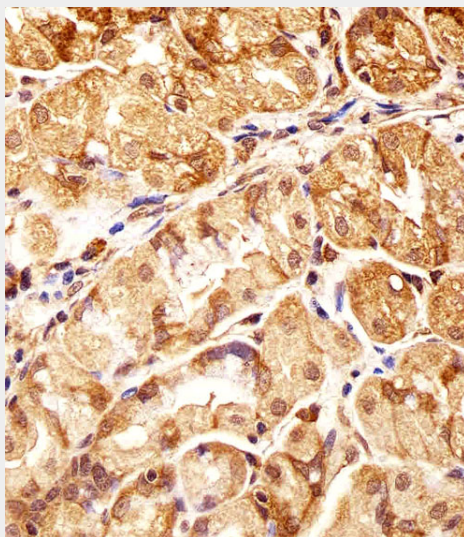
**POLDIP3 Antibody (N-term) - Images**



Fluorescent image of HeLa cells stained with POLDIP3 Antibody (N-term)(Cat#AP20109a). AP20109a was diluted at 1:25 dilution. An Alexa Fluor 488-conjugated goat anti-rabbit IgG at 1:400 dilution was used as the secondary antibody (green). Cytoplasmic actin was counterstained with Alexa Fluor® 555 conjugated with Phalloidin (red).



POLDIP3 Antibody (N-term) (Cat. #AP20109a) western blot analysis in Jurkat, mouse C2C12 cell line lysates (35ug/lane). This demonstrates the POLDIP3 Antibody antibody detected the POLDIP3 Antibody protein (arrow).



Immunohistochemical analysis of paraffin-embedded H. stomach section using POLDIP3 Antibody (N-term) (Cat#AP20109a). AP20109a was diluted at 1:25 dilution. A undiluted biotinylated goat polyvalent antibody was used as the secondary, followed by DAB staining.

#### **POLDIP3 Antibody (N-term) - Background**

This gene encodes a protein that interacts with the DNA polymerase delta p50 subunit. This protein is a specific target of S6 kinase 1 and regulates cell growth. Two transcript variants that encode different protein isoforms have been identified. [provided by RefSeq].

#### **POLDIP3 Antibody (N-term) - References**

- Ma, X.M., et al. Cell 133(2):303-313(2008)
- Matsuoka, S., et al. Science 316(5828):1160-1166(2007)
- Smyk, A., et al. FEBS J. 273(20):4728-4741(2006)
- Andersen, J.S., et al. Nature 433(7021):77-83(2005)

Richardson, C.J., et al. Curr. Biol. 14(17):1540-1549(2004)